

Pride Surveys Questionnaire for Grades 7 thru 12 Executive Summary

2013-14 Warren County Schools

Warren County, OH

January 06, 2014

sponsored by the *Coalition for a Drug-Free Greater Cincinnati*



PRIDE SURVEYS
160 Vanderbilt Court
Bowling Green, KY 42103
☎ 800.279.6361
☎ 270.746.9598
www.pridesurveys.com

Contents

1 Introduction	3
2 Demographics	4
3 Prevalence of Drug Use	5
4 Students' Perception of Harm	9
5 Students' Perception of Disapproval	11
6 Age of First Use	15
7 Students' Perception of Availability	16
8 Violence Indicators	18
9 Where Students Use	18
10 When Students Use	23
11 School Safety	28
12 Risk and Protective Factors	28

1 Introduction

We at Pride Surveys have reviewed the education legislation, No Child Left Behind (NCLB), and attended meetings in Washington, D.C., with USDOE for briefings on the legislation. This summary and the complete report on your CD-ROM are intended to assist you in meeting the data reporting requirements of NCLB.

Under the NCLB, schools are required to establish a Uniform Management and Information Reporting System. The collected data, from *anonymous student surveys*, shall include:

"...the incidence and prevalence, age of onset, perception of social disapproval of drug use and violence by youth in schools and communities".

The graphs and tables in this summary are compiled from data collected in your school(s) using the ***Pride Questionnaire for Grades 7-12***. These graphs and tables cover the areas typically of most interest for school systems. The areas covered are demographics, past 30 day drug use, perception of risk, students' perception of parental and peer disapproval, age of first use, violence indicators, where and when students use drugs, school and community safety, and risk and protective factors. The drugs covered in this summary are cigarette/tobacco use, alcohol use, marijuana use, and prescription drug use.

This summary and the accompanying CD-ROM (full report) will assist you in meeting the requirements of NCLB and requirements from agencies that have similar requirements in assessment and evaluation.

NOTE: THIS IS ONLY A BRIEF SUMMARY OF YOUR RESULTS. YOUR FULL AND COMPLETE REPORT CAN BE FOUND ON YOUR CD-ROM.

If you have questions about this report or if you wish to have information on other ***Pride Surveys*** services and products, please call the ***Pride Surveys*** Office or write to the following address:

Pride Surveys

Janie Pitcock

160 Vanderbilt Court

Bowling Green, KY 42103

1-800-279-6361

1-270-746-9596

E-Mail: janie.pitcock@pridesurveys.com

Web Site: www.pridesurveys.com

2 Demographics

Total number of students surveyed: **14,627**

- Number of 7th grade students surveyed: **2,630 (18.0%)**
- Number of 8th grade students surveyed: **2,751 (18.8%)**
- Number of 9th grade students surveyed: **2,483 (17.0%)**
- Number of 10th grade students surveyed: **2,485 (17.0%)**
- Number of 11th grade students surveyed: **2,383 (16.3%)**
- Number of 12th grade students surveyed: **1,895 (13.0%)**

Breakdown by sex - it is possible for the sum of the numbers by sex to be less than the overall total since not all students will answer the sex question.

- Number of Male students surveyed: **7,217 (50.7%)**
- Number of Female students surveyed: **7,025 (49.3%)**

Breakdown by race - it is possible for the sum of the numbers by race to be less than the overall total since not all students will answer the race question.

- Number of White students surveyed: **12,024 (83.8%)**
- Number of Black or African American students surveyed: **409 (2.9%)**
- Number of Native American or Alaska Native students surveyed: **53 (0.4%)**
- Number of Asian students surveyed: **728 (5.1%)**
- Number of Native Hawaiian or other Pacific Islander students surveyed: **47 (0.3%)**
- Number of Other students surveyed: **409 (2.9%)**
- Number of Multi-racial students surveyed: **674 (4.7%)**

Are you Hispanic or Latino/Latina?

- Number of Yes students surveyed: **631 (4.8%)**
- Number of No students surveyed: **12,646 (95.2%)**

3 Prevalence of Drug Use

The following tables detail reported use of cigarettes, alcohol, marijuana and prescription drugs in the past 30 days. For tables, *N of Valid* is the number of students who answered the question and *N of Missing* is the number of students who did not answer the question.

Table 1: Past 30 Day Use – **Cigarettes**

Grade Level	N of Valid	N of Miss	30 Day Use
7th	2526	104	1.8
8th	2633	118	4.2
9th	2399	84	6.3
10th	2387	98	9.0
11th	2308	75	14.4
12th	1826	69	21.0
6-8	5159	222	3.0
9-12	8920	326	12.1
Total	14079	548	8.8

Table 2: Past 30 Day Use – **Alcohol**

Grade Level	N of Valid	N of Miss	30 Day Use
7th	2529	101	2.8
8th	2635	116	5.4
9th	2399	84	10.2
10th	2387	98	17.6
11th	2311	72	25.1
12th	1821	74	36.7
6-8	5164	217	4.2
9-12	8918	328	21.4
Total	14082	545	15.1

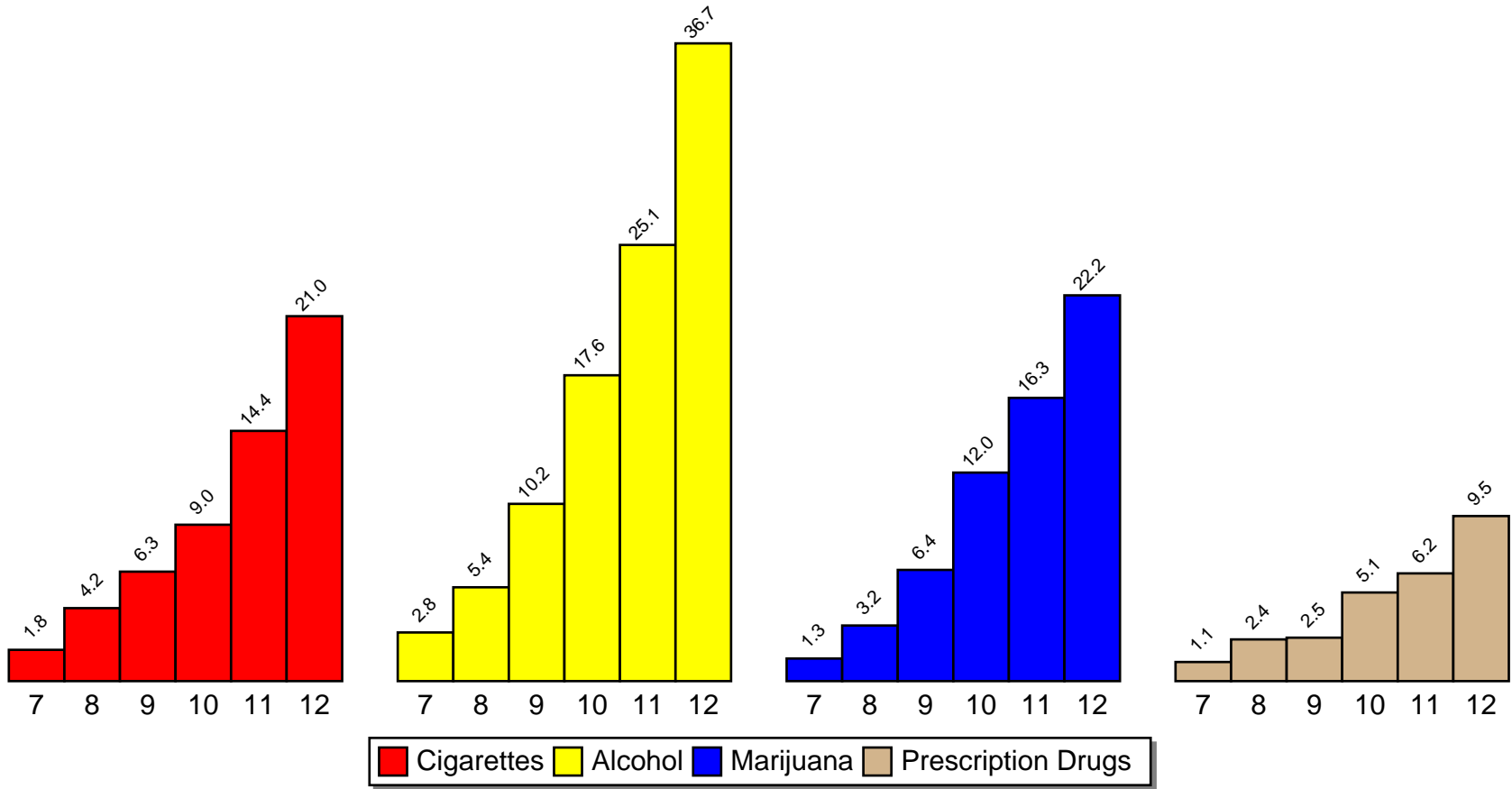
Table 3: Past 30 Day Use – **Marijuana**

Grade Level	N of Valid	N of Miss	30 Day Use
7th	2506	124	1.3
8th	2624	127	3.2
9th	2392	91	6.4
10th	2386	99	12.0
11th	2296	87	16.3
12th	1819	76	22.2
6-8	5130	251	2.2
9-12	8893	353	13.7
Total	14023	604	9.5

Table 4: Past 30 Day Use – **Prescription Drugs**

Grade Level	N of Valid	N of Miss	30 Day Use
7th	2520	110	1.1
8th	2631	120	2.4
9th	2399	84	2.5
10th	2389	96	5.1
11th	2306	77	6.2
12th	1823	72	9.5
6-8	5151	230	1.8
9-12	8917	329	5.6
Total	14068	559	4.2

Past 30 Day Use of Cigarettes, Alcohol, Marijuana & Prescription Drugs



Source: Pride Surveys

Table 5: Frequency of Use – Any **Tobacco?**

Grade Level	N of Valid	N of Miss	Daily	Weekly	Annual
7th	2615	15	0.5	0.6	3.0
8th	2741	10	1.2	2.6	6.3
9th	2456	27	1.8	4.4	11.4
10th	2454	31	4.6	8.4	18.9
11th	2363	20	7.4	12.5	28.0
12th	1877	18	12.6	18.5	36.5
6-8	5356	25	0.9	1.6	4.7
9-12	9150	96	6.2	10.4	22.8
Total	14506	121	4.2	7.2	16.1

Table 7: Frequency of Use – Any **Marijuana?**

Grade Level	N of Valid	N of Miss	Daily	Weekly	Annual
7th	2611	19	0.2	0.6	1.7
8th	2737	14	0.5	1.5	4.1
9th	2445	38	1.3	3.2	9.2
10th	2445	40	3.5	7.6	19.1
11th	2353	30	4.7	10.0	25.8
12th	1868	27	8.0	14.4	32.1
6-8	5348	33	0.4	1.0	2.9
9-12	9111	135	4.1	8.4	20.8
Total	14459	168	2.8	5.7	14.2

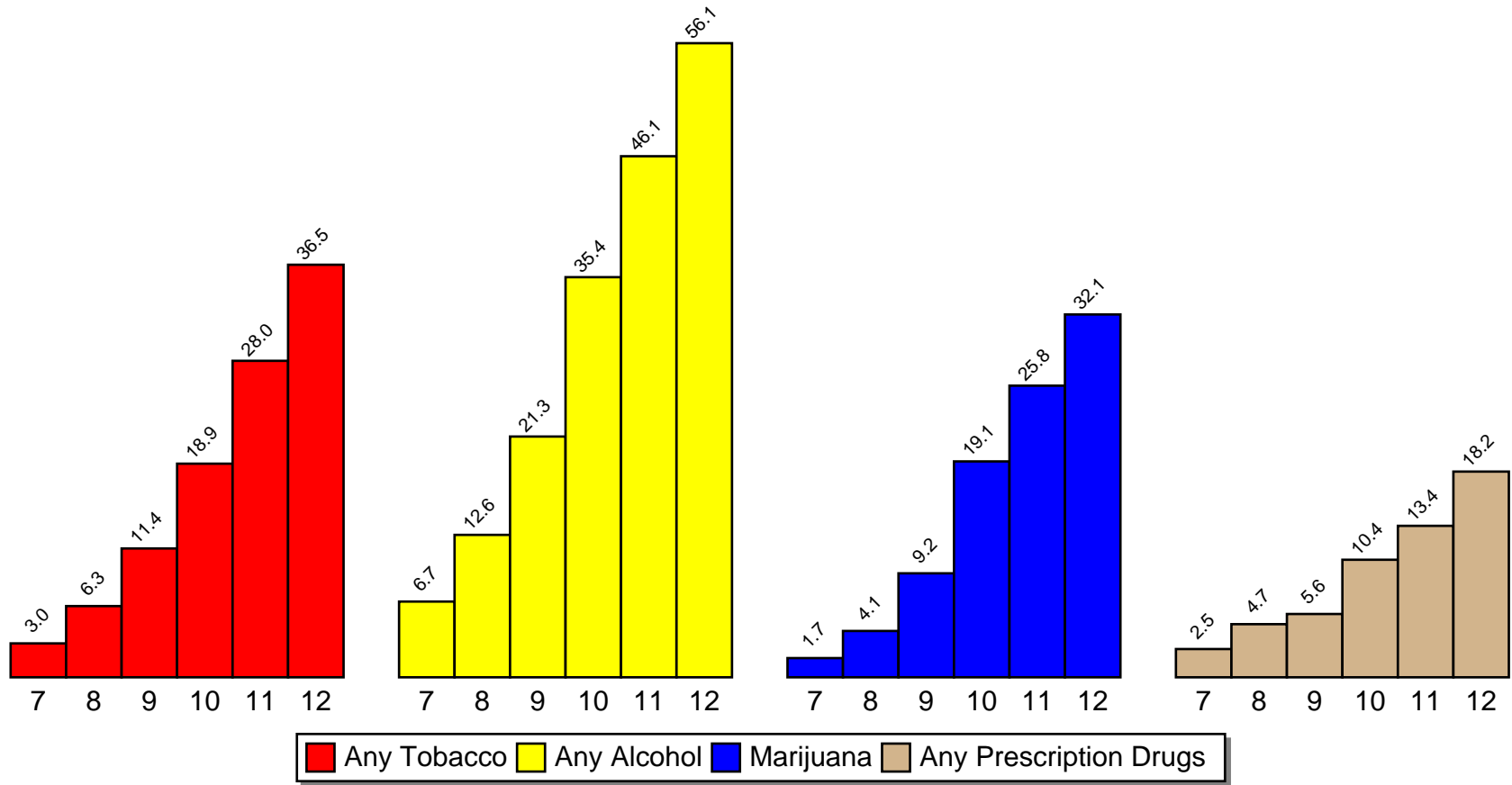
Table 8: Frequency of Use – Any **Prescription Drugs?**

Grade Level	N of Valid	N of Miss	Daily	Weekly	Annual
7th	2611	19	0.3	0.6	2.5
8th	2742	9	0.7	1.2	4.7
9th	2456	27	0.7	1.3	5.6
10th	2452	33	1.6	2.9	10.4
11th	2362	21	2.1	4.2	13.4
12th	1872	23	4.2	6.8	18.2
6-8	5353	28	0.5	0.9	3.6
9-12	9142	104	2.0	3.6	11.5
Total	14495	132	1.5	2.6	8.6

Table 6: Frequency of Use – Any **Alcohol?**

Grade Level	N of Valid	N of Miss	Daily	Weekly	Annual
7th	2613	17	0.2	0.5	6.7
8th	2741	10	0.4	1.1	12.6
9th	2455	28	0.5	2.9	21.3
10th	2451	34	1.4	6.3	35.4
11th	2362	21	2.0	8.9	46.1
12th	1875	20	3.6	15.3	56.1
6-8	5354	27	0.3	0.8	9.7
9-12	9143	103	1.8	7.9	38.6
Total	14497	130	1.2	5.3	27.9

% Students Who Use Tobacco, Alcohol, Marijuana, & Prescription Drugs Annual Use (ie. Use in the Past Year)



Source: Pride Surveys

4 Students' Perception of Harm

Students are asked about their perception of harm of any use of various drugs with the possible responses being *No Harm*, *Some Harm*, *Harmful* or *Very Harmful*. Past analysis of national statistics indicates that as students' perception of harm increases, use of substances decreases. It is also typical for the perception of harm (*Harmful* or *Very Harmful*) to decrease as a child gets older. Your students' responses are detailed in the following tables.

Table 9: Students' Perception of Harm of **Tobacco**

Grade Level	N of Valid	N of Miss	Harmful or Very Harmful
7th	2555	75	93.5
8th	2716	35	93.2
9th	2427	56	93.2
10th	2419	66	91.8
11th	2349	34	91.2
12th	1854	41	88.6
6-8	5271	110	93.3
9-12	9049	197	91.4
Total	14320	307	92.1

Table 10: Students' Perception of Harm of **Alcohol**

Grade Level	N of Valid	N of Miss	Harmful or Very Harmful
7th	2550	80	84.2
8th	2714	37	78.6
9th	2426	57	71.1
10th	2417	68	67.4
11th	2347	36	61.7
12th	1850	45	53.5
6-8	5264	117	81.3
9-12	9040	206	64.0
Total	14304	323	70.4

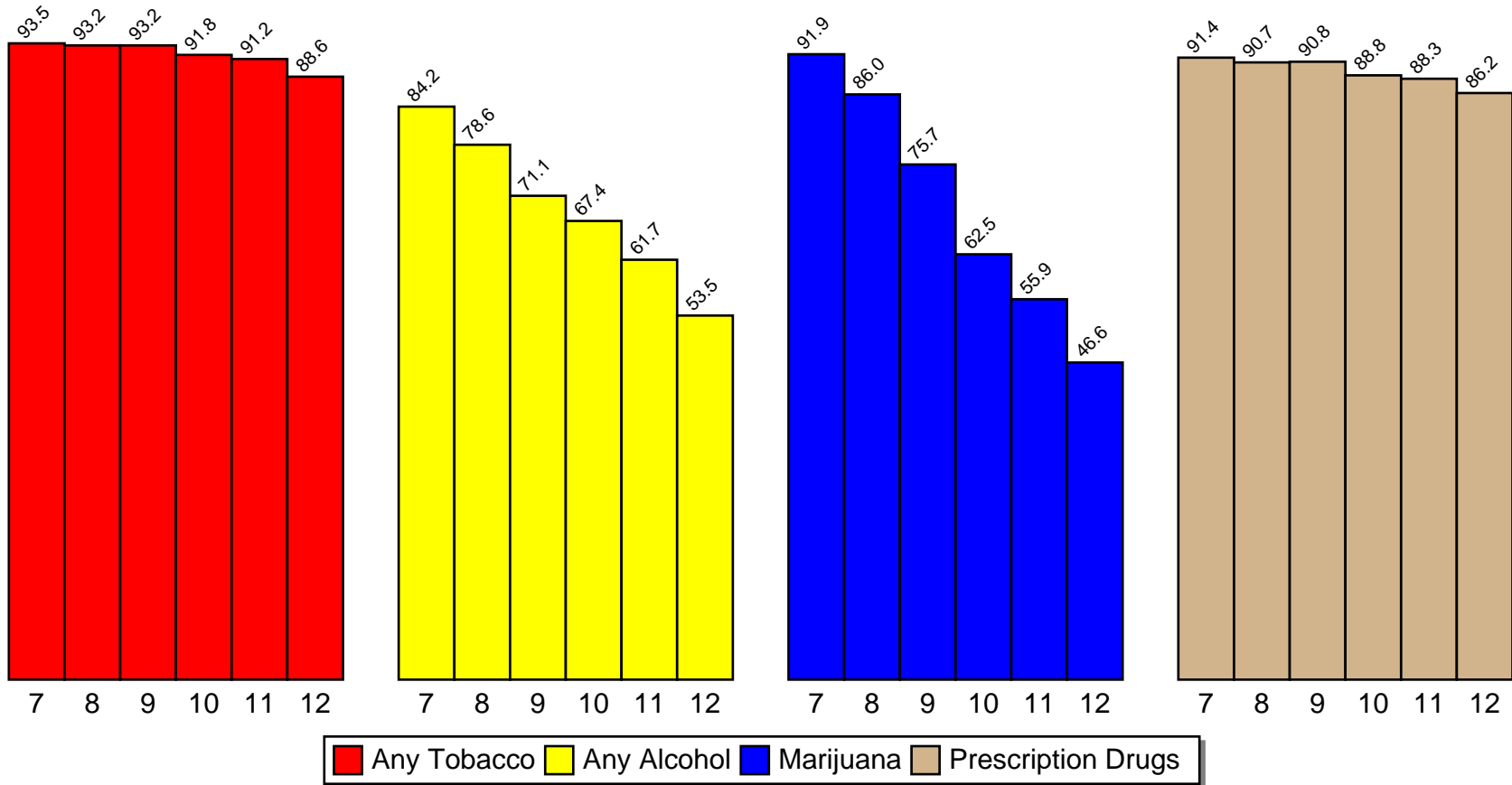
Table 11: Students' Perception of Harm of **Marijuana**

Grade Level	N of Valid	N of Miss	Harmful or Very Harmful
7th	2534	96	91.9
8th	2711	40	86.0
9th	2415	68	75.7
10th	2416	69	62.5
11th	2339	44	55.9
12th	1843	52	46.6
6-8	5245	136	88.8
9-12	9013	233	61.1
Total	14258	369	71.3

Table 12: Students' Perception of Harm of **Prescription Drugs**

Grade Level	N of Valid	N of Miss	Harmful or Very Harmful
7th	2539	91	91.4
8th	2707	44	90.7
9th	2419	64	90.8
10th	2413	72	88.8
11th	2336	47	88.3
12th	1842	53	86.2
6-8	5246	135	91.0
9-12	9010	236	88.7
Total	14256	371	89.5

% Students Who Perceive Tobacco, Alcohol, Marijuana, & Prescription Drugs As Harmful Or Very Harmful



5 Students' Perception of Disapproval

Past analysis of national statistics indicates that the majority of students tend to perceive parents as feeling it is *Wrong* or *Very Wrong* for students to use tobacco, alcohol, marijuana and prescription drugs for all grade levels. Your students' responses are detailed in the following tables.

Table 13: Students' Perception Of **Parents'** Disapproval Of Use of **Tobacco**

Grade Level	N of Valid	N of Miss	Wrong or Very Wrong
7th	2554	76	98.6
8th	2719	32	98.3
9th	2439	44	97.2
10th	2429	56	94.9
11th	2338	45	91.9
12th	1842	53	86.3
6-8	5273	108	98.4
9-12	9048	198	93.0
Total	14321	306	95.0

Table 14: Students' Perception Of **Parents'** Disapproval Of Use of **Alcohol**

Grade Level	N of Valid	N of Miss	Wrong or Very Wrong
7th	2529	101	96.2
8th	2698	53	95.0
9th	2417	66	92.1
10th	2419	66	85.6
11th	2323	60	80.6
12th	1837	58	71.6
6-8	5227	154	95.6
9-12	8996	250	83.2
Total	14223	404	87.8

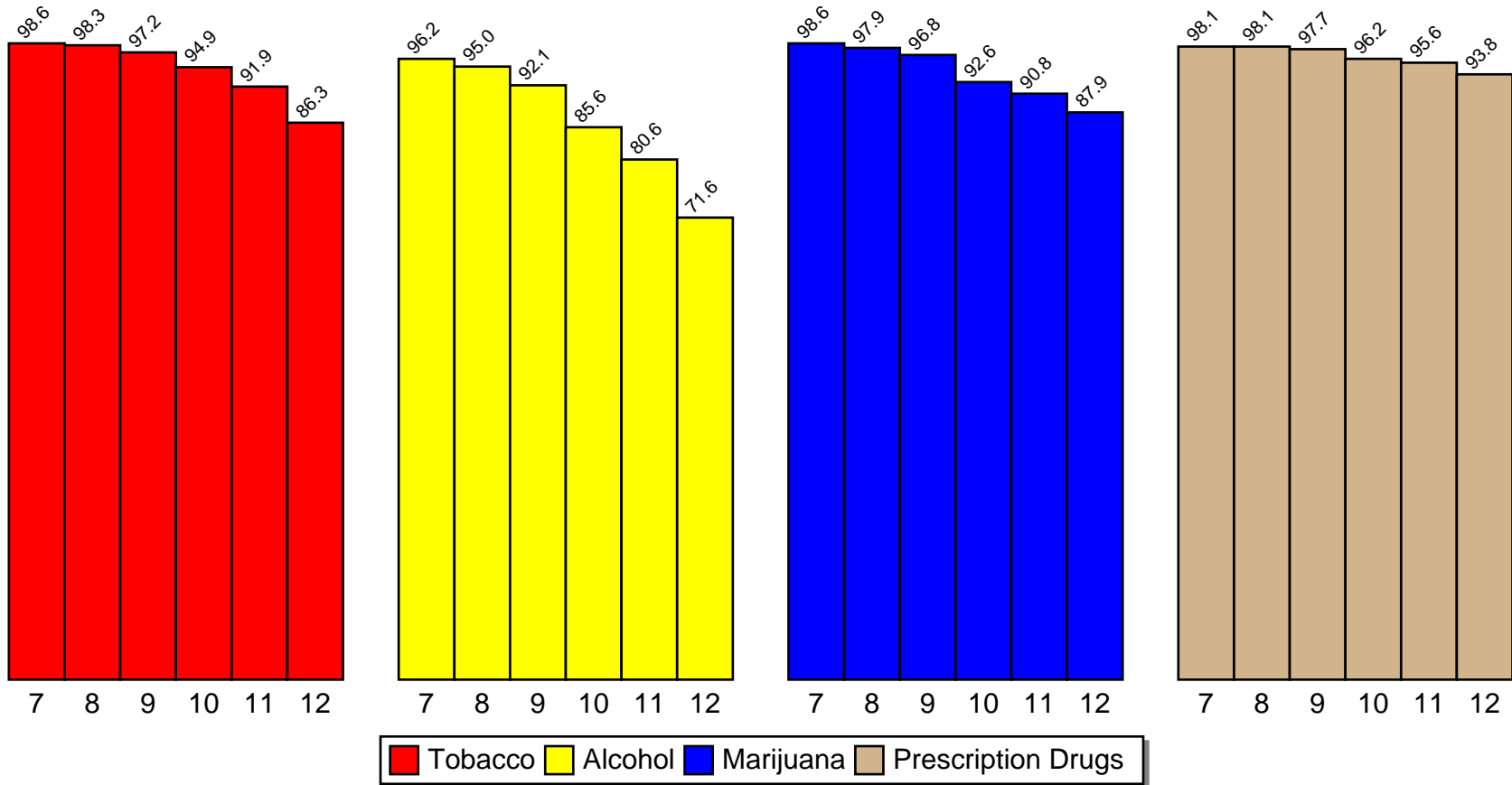
Table 15: Students' Perception Of **Parents'** Disapproval Of Use of **Marijuana**

Grade Level	N of Valid	N of Miss	Wrong or Very Wrong
7th	2554	76	98.6
8th	2720	31	97.9
9th	2441	42	96.8
10th	2424	61	92.6
11th	2338	45	90.8
12th	1842	53	87.9
6-8	5274	107	98.2
9-12	9045	201	92.3
Total	14319	308	94.5

Table 16: Students' Perception Of **Parents'** Disapproval Of Use of **Prescription Drugs**

Grade Level	N of Valid	N of Miss	Wrong or Very Wrong
7th	2552	78	98.1
8th	2716	35	98.1
9th	2442	41	97.7
10th	2427	58	96.2
11th	2338	45	95.6
12th	1844	51	93.8
6-8	5268	113	98.1
9-12	9051	195	96.0
Total	14319	308	96.8

% Perceive Parents Feel It Is Wrong or Very Wrong For Students To Use Tobacco, Alcohol, Marijuana, and Prescription Drugs



Source: Pride Surveys

Typically, students perceive a decreasing amount of disapproval from their friends as they grow older. This is helpful in understanding peer pressure. The following tables detail your students' responses to their friends' disapproval.

Table 17: Students' Perception of **Friends'** Disapproval of Use of **Tobacco**

Grade Level	N of Valid	N of Miss	Wrong or Very Wrong
7th	2542	88	95.1
8th	2716	35	90.5
9th	2434	49	84.5
10th	2422	63	73.6
11th	2342	41	67.0
12th	1847	48	54.7
6-8	5258	123	92.7
9-12	9045	201	71.0
Total	14303	324	79.0

Table 18: Students' Perception of **Friends'** Disapproval of Use of **Alcohol**

Grade Level	N of Valid	N of Miss	Wrong or Very Wrong
7th	2530	100	91.9
8th	2712	39	84.2
9th	2427	56	71.5
10th	2422	63	53.0
11th	2343	40	42.1
12th	1849	46	29.5
6-8	5242	139	87.9
9-12	9041	205	50.3
Total	14283	344	64.1

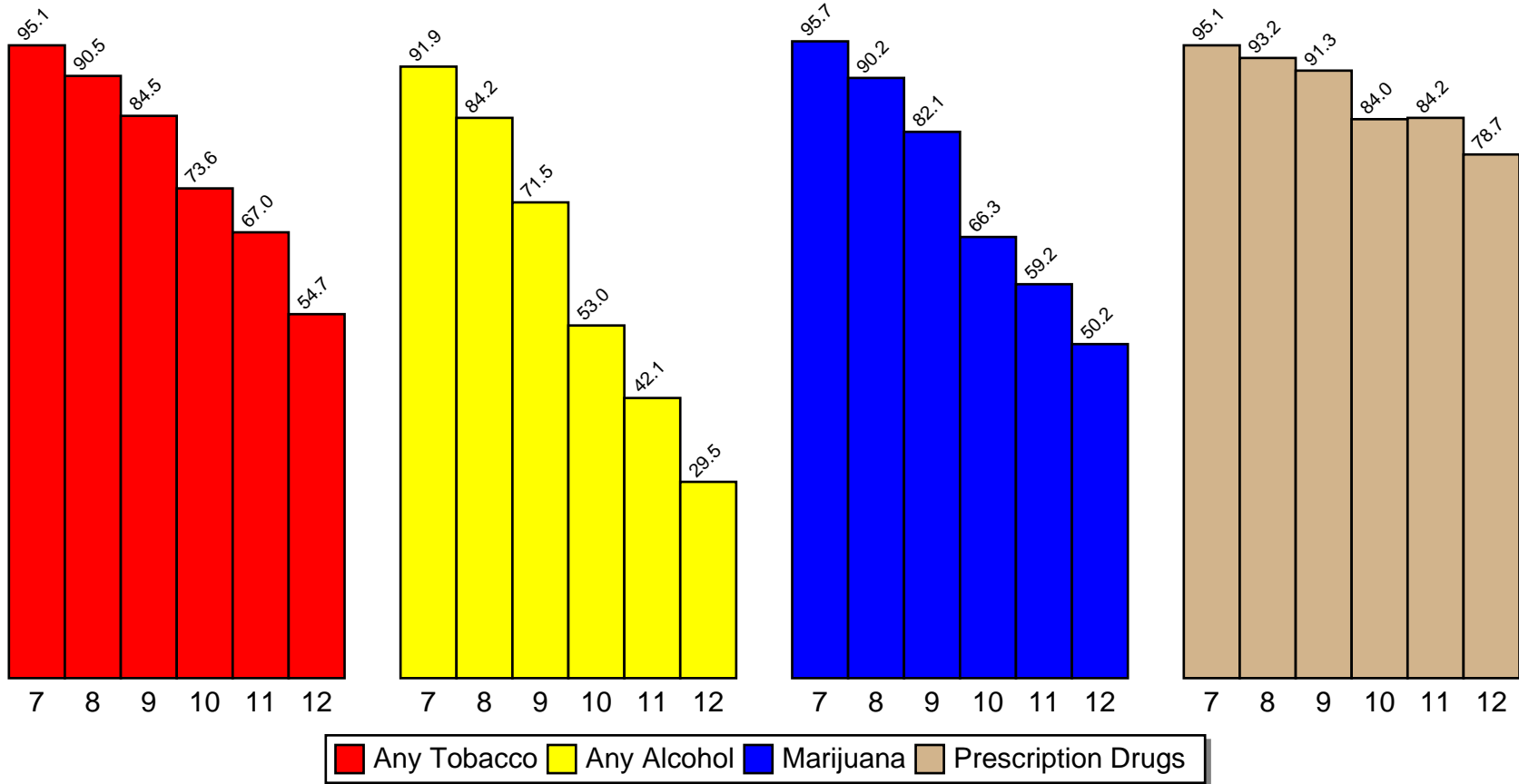
Table 19: Students' Perception of **Friends'** Disapproval of Use of **Marijuana**

Grade Level	N of Valid	N of Miss	Wrong or Very Wrong
7th	2539	91	95.7
8th	2714	37	90.2
9th	2430	53	82.1
10th	2421	64	66.3
11th	2338	45	59.2
12th	1847	48	50.2
6-8	5253	128	92.8
9-12	9036	210	65.5
Total	14289	338	75.5

Table 20: Students' Perception of **Friends'** Disapproval of Use of **Prescription Drugs**

Grade Level	N of Valid	N of Miss	Wrong or Very Wrong
7th	2538	92	95.1
8th	2715	36	93.2
9th	2428	55	91.3
10th	2419	66	84.0
11th	2340	43	84.2
12th	1844	51	78.7
6-8	5253	128	94.1
9-12	9031	215	84.9
Total	14284	343	88.3

% Perceive Friends Feel It Is Wrong or Very Wrong For Students To Use Tobacco, Alcohol, Marijuana, and Prescription Drugs



Source: Pride Surveys

6 Age of First Use

The question *At what age did you first use...* is used to measure this statistic. The possible responses to this question range from *10 or Under* to *17 or Older* and *Never Used*. The table shows the average age of first use for those students who answered the question with a response other than *Never Used*.

Table 21: When did you first use any **tobacco**?

Grade Level	N of Valid	N of Miss	Avg Age
7th	93	2537	11.3
8th	208	2543	12.0
9th	312	2171	12.4
10th	516	1969	13.1
11th	717	1666	13.8
12th	723	1172	14.4
6-8	301	5080	11.8
9-12	2268	6978	13.7
Total	2569	12058	13.4

Table 22: When did you first use any **alcohol**?

Grade Level	N of Valid	N of Miss	Avg Age
7th	230	2400	11.1
8th	410	2341	11.8
9th	617	1866	12.4
10th	943	1542	13.3
11th	1195	1188	14.1
12th	1119	776	14.6
6-8	640	4741	11.5
9-12	3874	5372	13.8
Total	4514	10113	13.5

Table 23: When did you first use any **marijuana**?

Grade Level	N of Valid	N of Miss	Avg Age
7th	46	2584	11.9
8th	121	2630	12.7
9th	245	2238	12.9
10th	488	1997	13.6
11th	650	1733	14.2
12th	664	1231	14.7
6-8	167	5214	12.4
9-12	2047	7199	14.1
Total	2214	12413	13.9

Table 24: When did you first use any **prescription drugs**?

Grade Level	N of Valid	N of Miss	Avg Age
7th	43	2587	11.3
8th	80	2671	11.9
9th	76	2407	12.5
10th	169	2316	13.2
11th	224	2159	13.7
12th	249	1646	14.2
6-8	123	5258	11.7
9-12	718	8528	13.6
Total	841	13786	13.3

7 Students' Perception of Availability

Past analysis of national statistics indicates that as students get older a larger percentage of them tend to perceive tobacco, alcohol, marijuana, and prescription drugs as *Fairly Easy* or *Very Easy* to get. Your students' responses are detailed in the following tables.

Table 25: Students' Perception of Availability of **Tobacco**

Grade Level	N of Valid	N of Miss	Fairly Easy or Very Easy to Get
7th	2510	120	23.7
8th	2679	72	28.3
9th	2406	77	34.6
10th	2414	71	45.4
11th	2340	43	56.5
12th	1844	51	70.8
6-8	5189	192	26.1
9-12	9004	242	50.6
Total	14193	434	41.6

Table 26: Students' Perception of Availability of **Alcohol**

Grade Level	N of Valid	N of Miss	Fairly Easy or Very Easy to Get
7th	2506	124	26.3
8th	2672	79	31.6
9th	2408	75	40.0
10th	2416	69	49.2
11th	2342	41	57.8
12th	1851	44	64.8
6-8	5178	203	29.0
9-12	9017	229	52.2
Total	14195	432	43.7

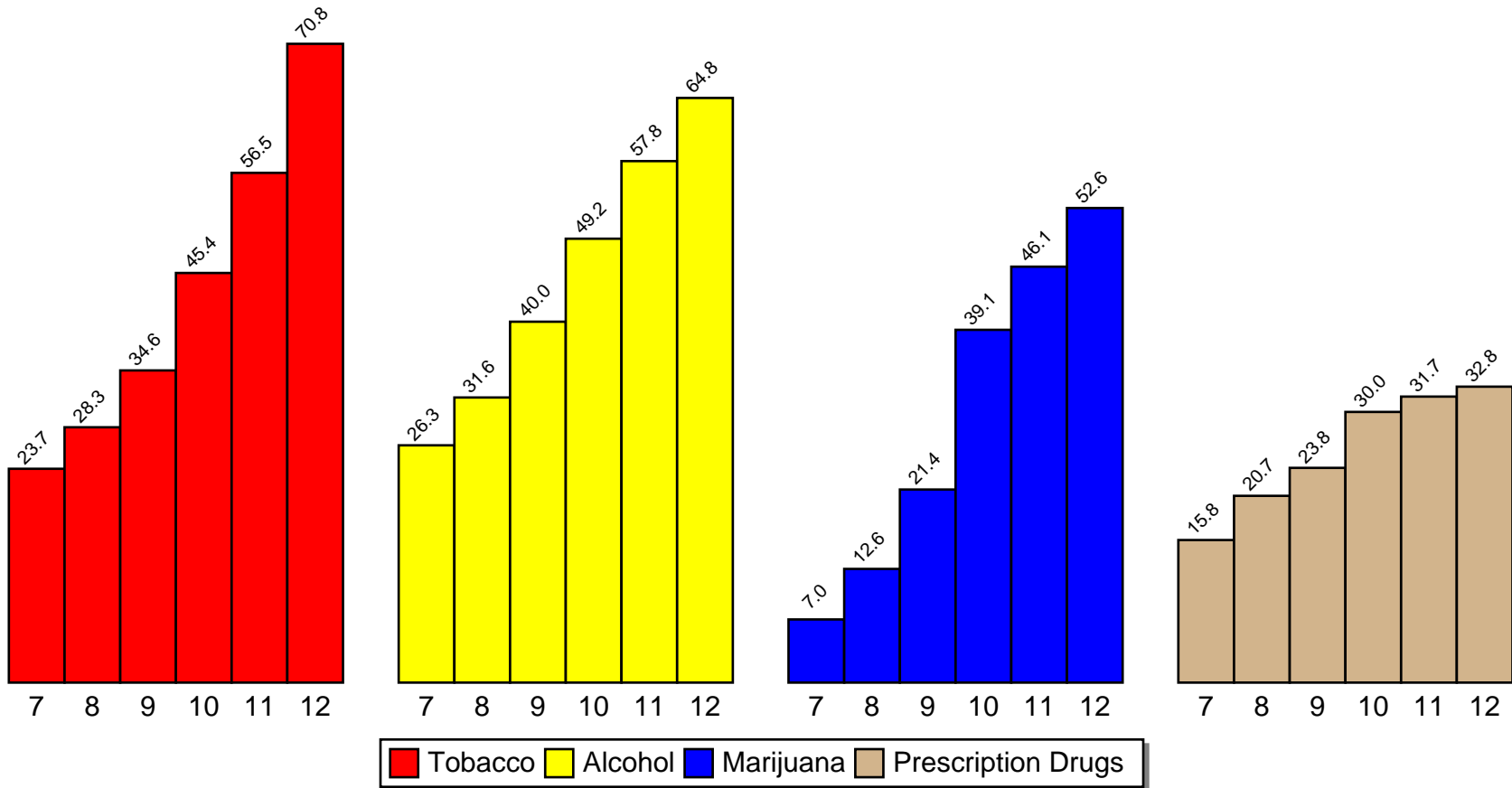
Table 27: Students' Perception of Availability of **Marijuana**

Grade Level	N of Valid	N of Miss	Fairly Easy or Very Easy to Get
7th	2502	128	7.0
8th	2669	82	12.6
9th	2410	73	21.4
10th	2408	77	39.1
11th	2336	47	46.1
12th	1844	51	52.6
6-8	5171	210	9.9
9-12	8998	248	38.9
Total	14169	458	28.3

Table 28: Students' Perception of Availability of **Prescription Drugs**

Grade Level	N of Valid	N of Miss	Fairly Easy or Very Easy to Get
7th	2502	128	15.8
8th	2681	70	20.7
9th	2410	73	23.8
10th	2414	71	30.0
11th	2336	47	31.7
12th	1844	51	32.8
6-8	5183	198	18.3
9-12	9004	242	29.3
Total	14187	440	25.3

% Students Who Perceive Tobacco, Alcohol, Marijuana, and Prescription Drugs As Fairly Easy Or Very Easy To Get



Source: Pride Surveys

8 Violence Indicators

The following table lists the percentage of students who made any positive response to the following questions.

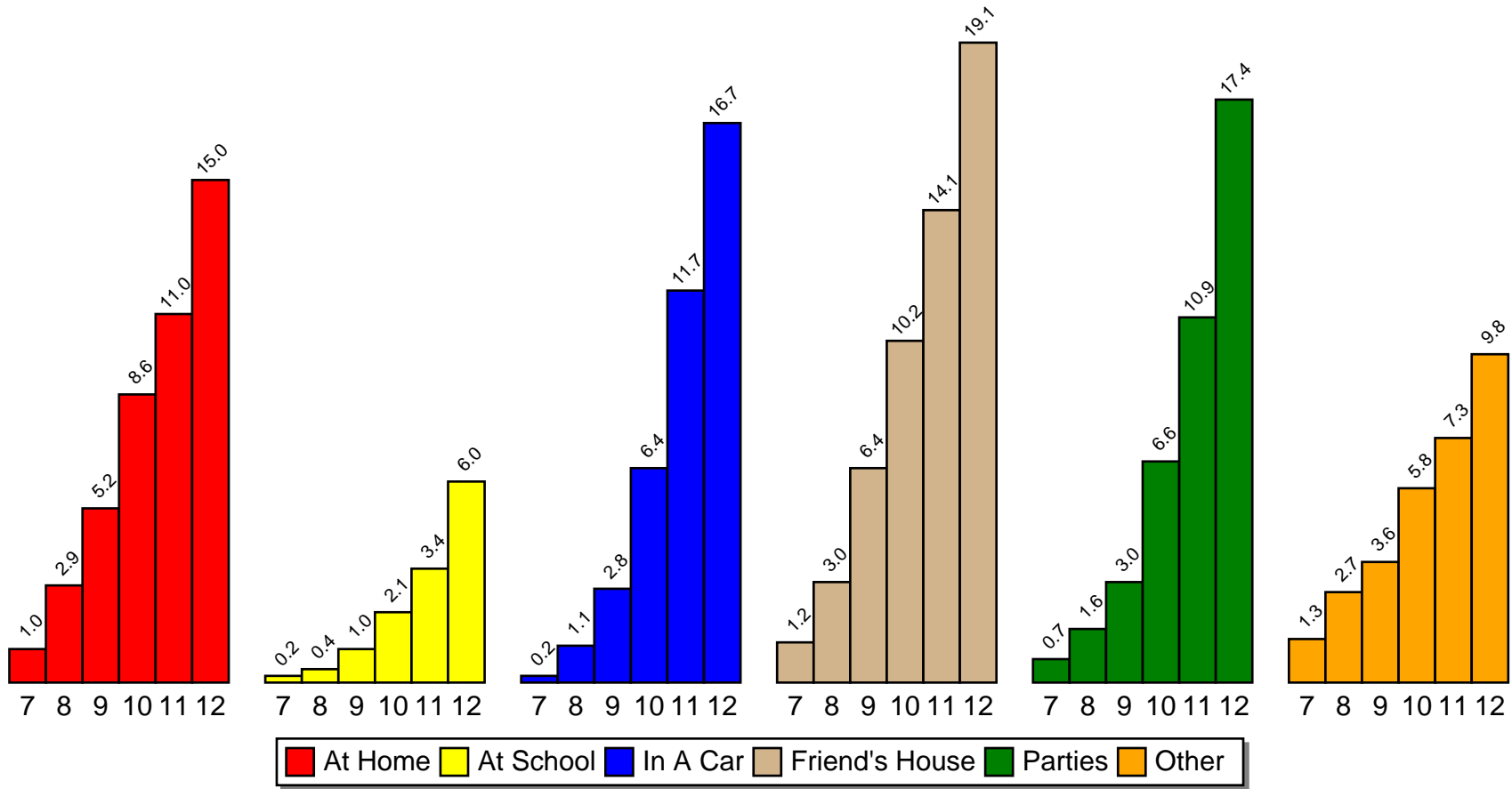
Table 29: Violence Indicators

Violence Indicator	Num	Pct
Threatened a fellow student	2,499	17.6%
Being afraid at school	2,289	16.3%
Being hurt at school	2,139	15.1%
Get into trouble with police	2,111	14.5%
Participated in gangs	832	5.7%

9 Where Students Use

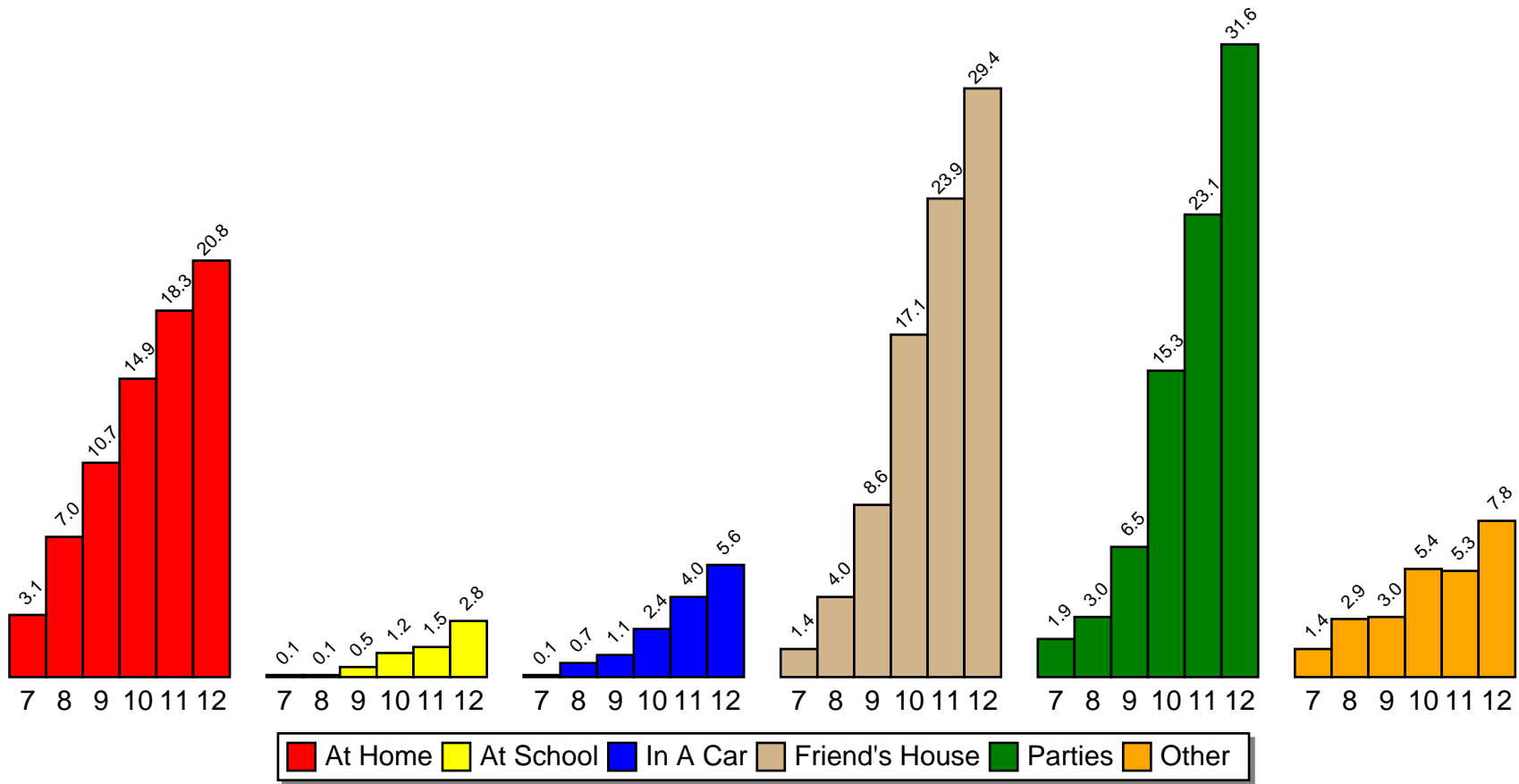
The following graphs show where students report using tobacco, alcohol, marijuana, and prescription drugs. Past analysis of national statistics show that *At School* is typically the *least* popular place of use.

Where Do You Use Any Tobacco



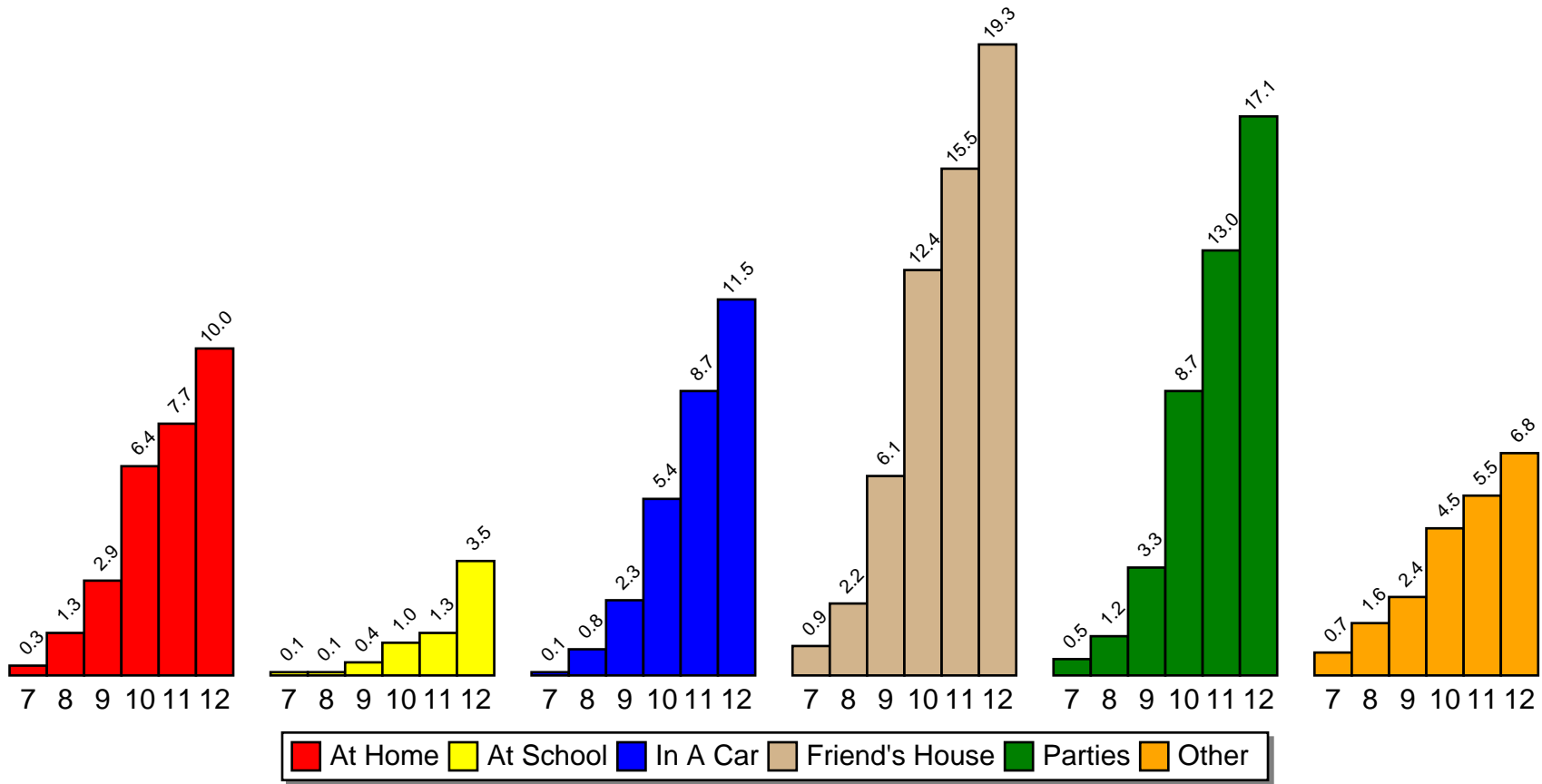
Source: Pride Surveys

Where Do You Use Any Alcohol



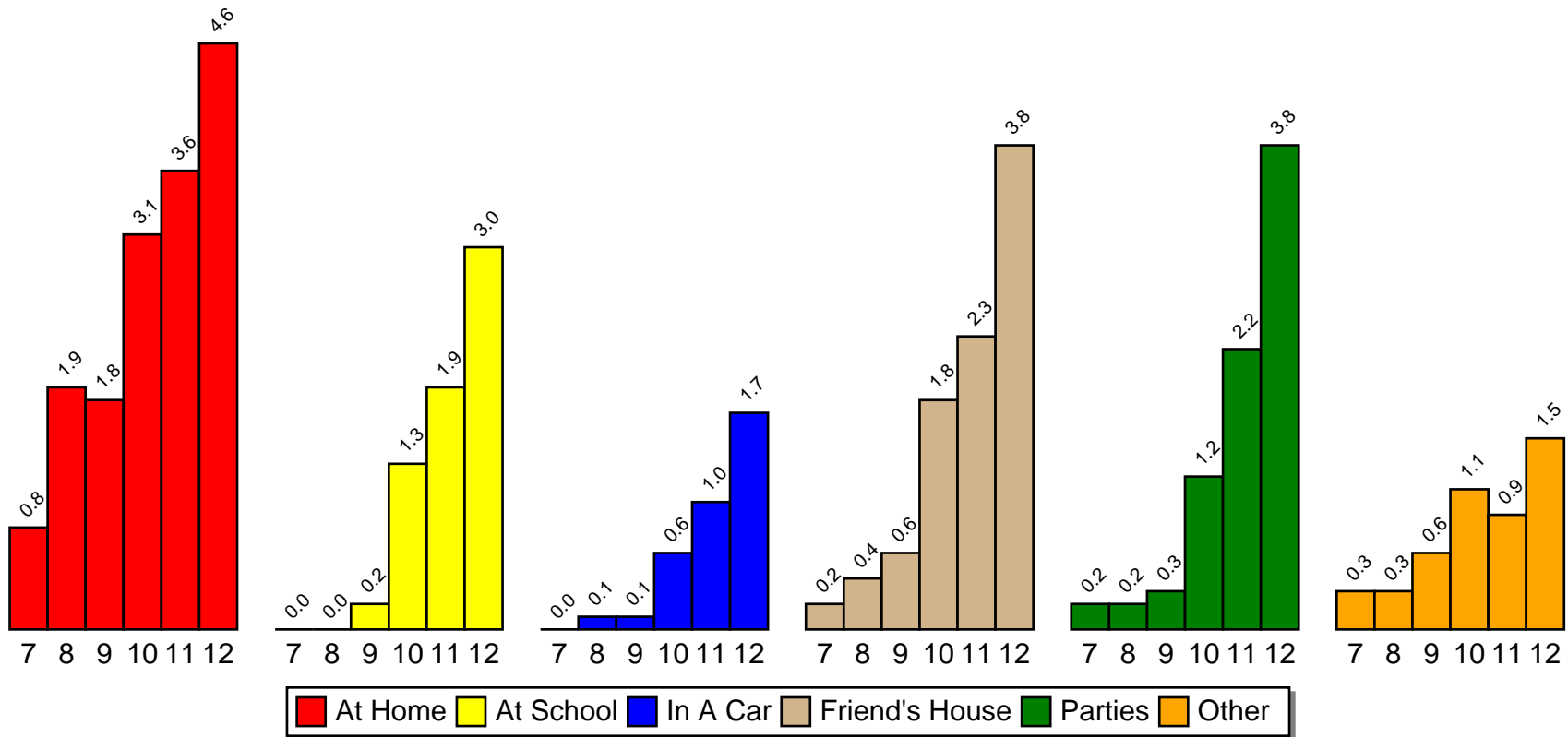
Source: Pride Surveys

Where Do You Use Marijuana



Source: Pride Surveys

Where Do You Use Prescription Drugs

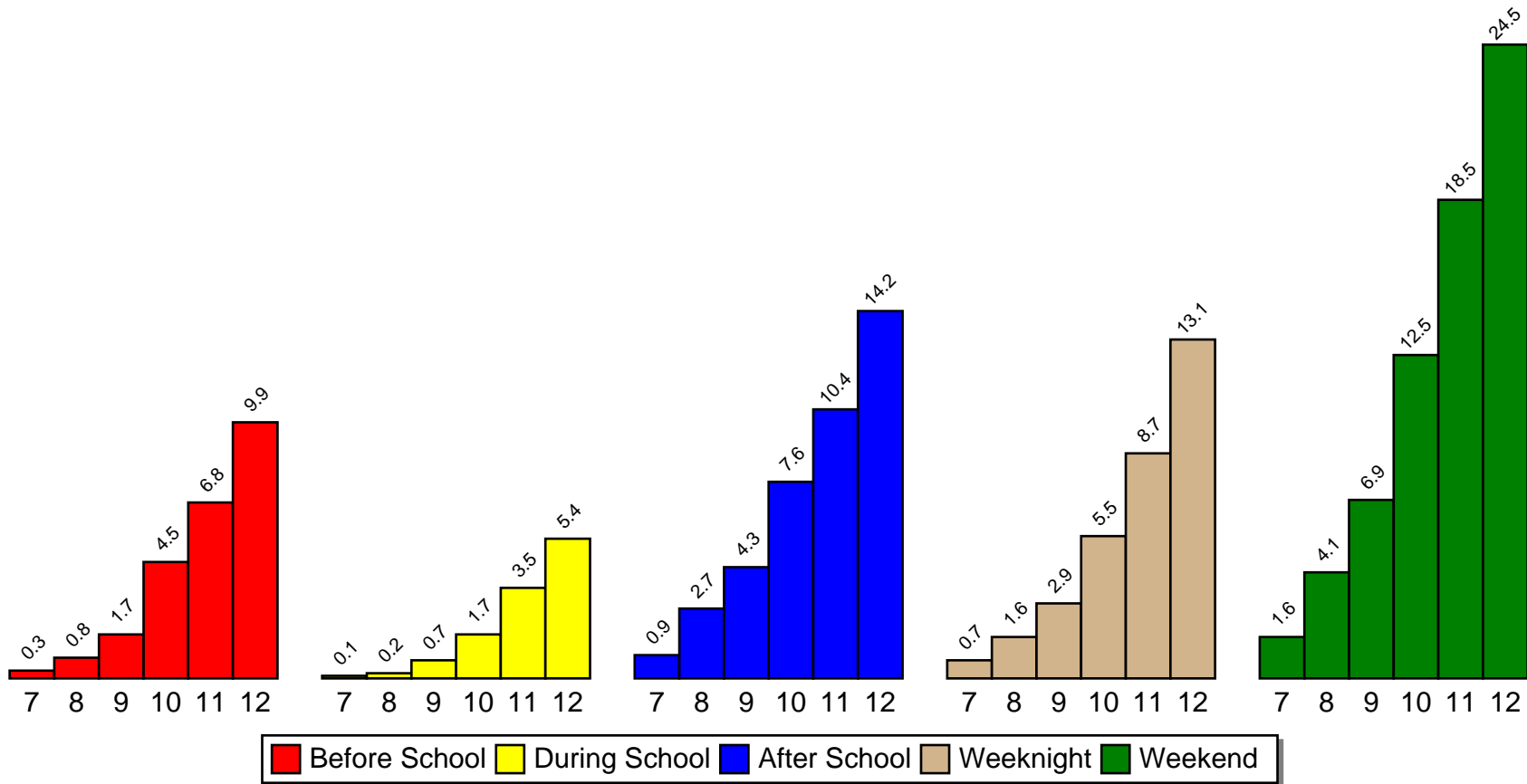


Source: Pride Surveys

10 When Students Use

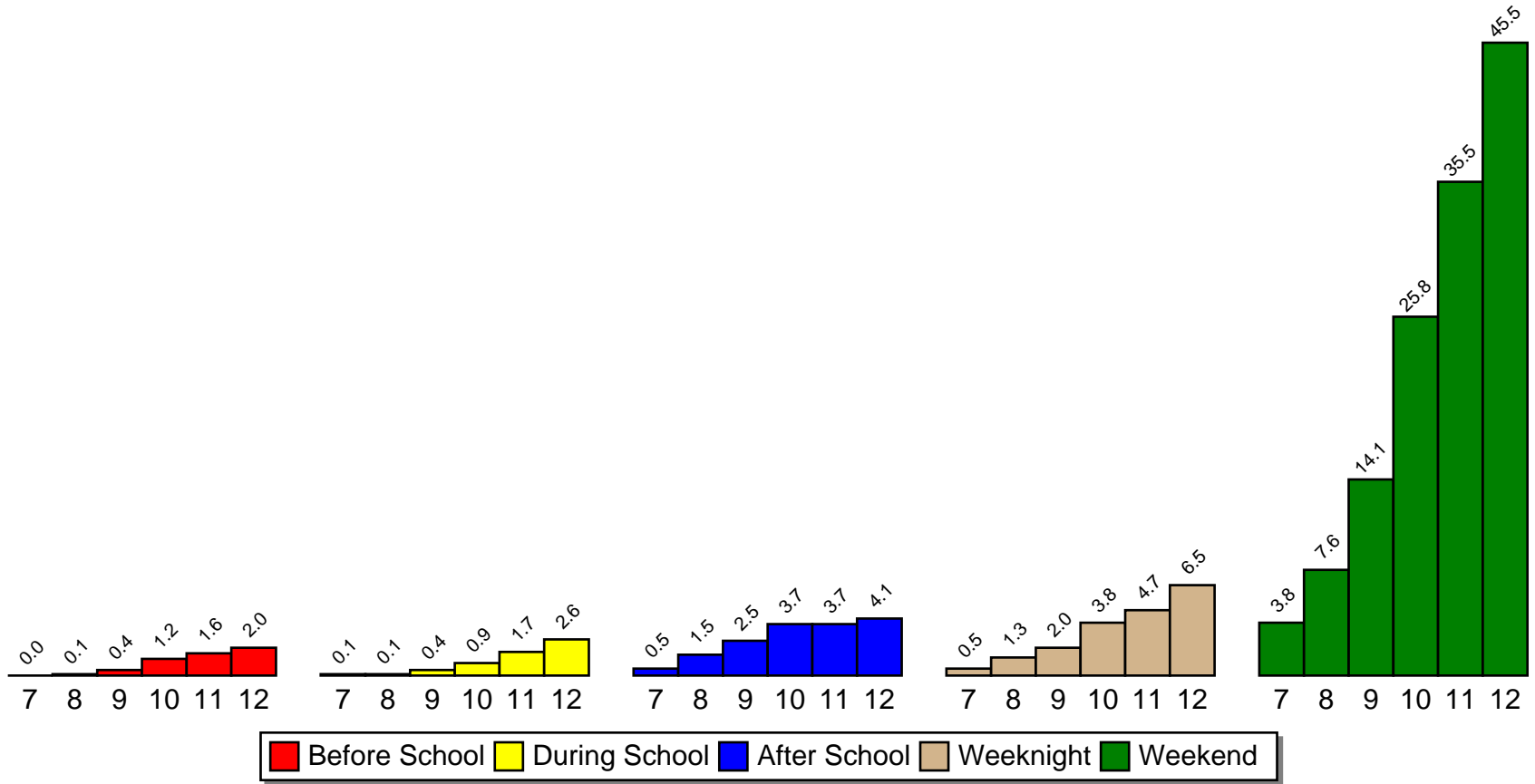
The following graphs show when students report using tobacco, alcohol, marijuana, and prescription drugs. Past analysis of national statistics show that *During School* is typically the *least* popular time of use.

When Do You Use Any Tobacco



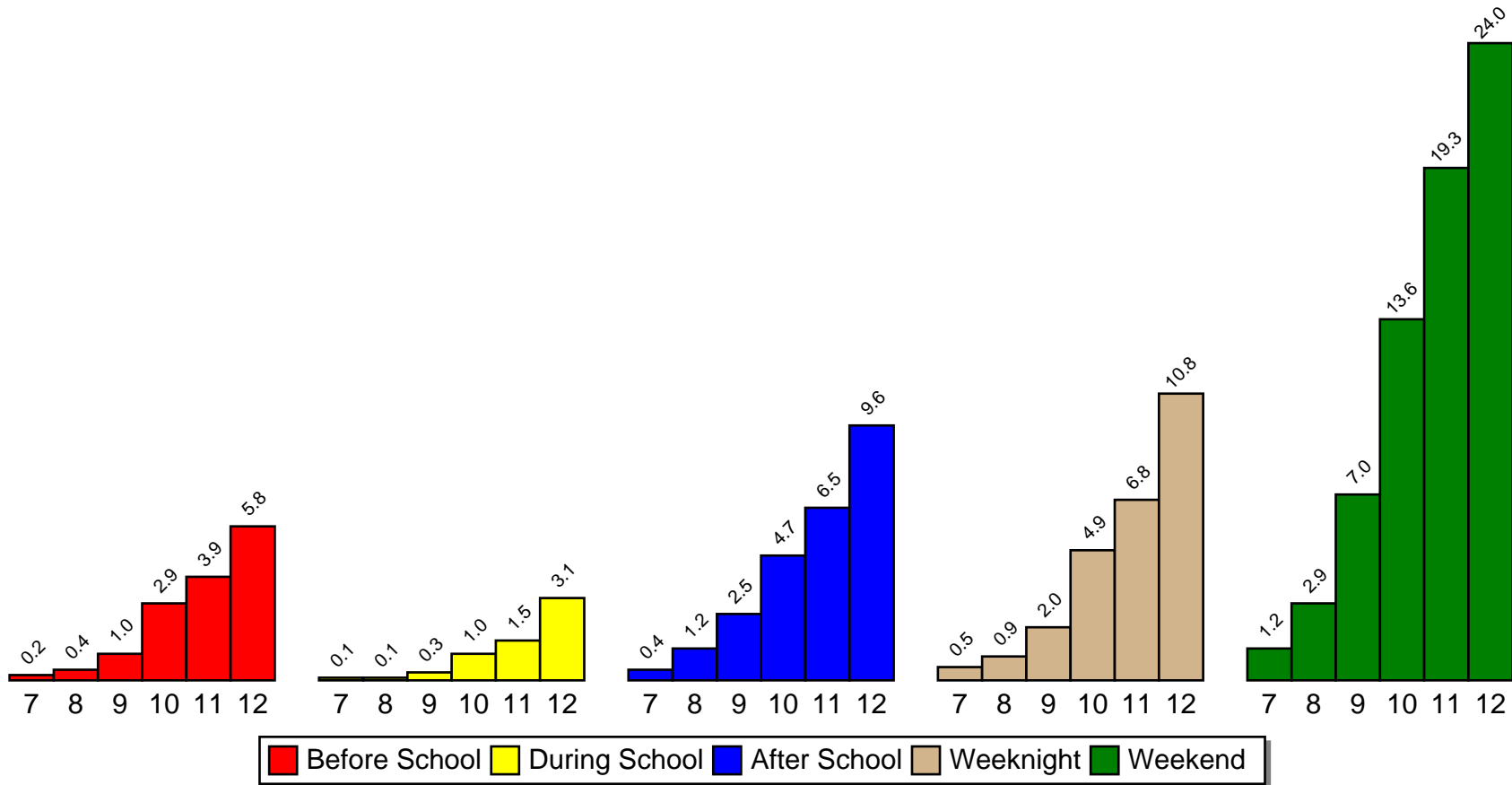
Source: Pride Surveys

When Do You Use Any Alcohol



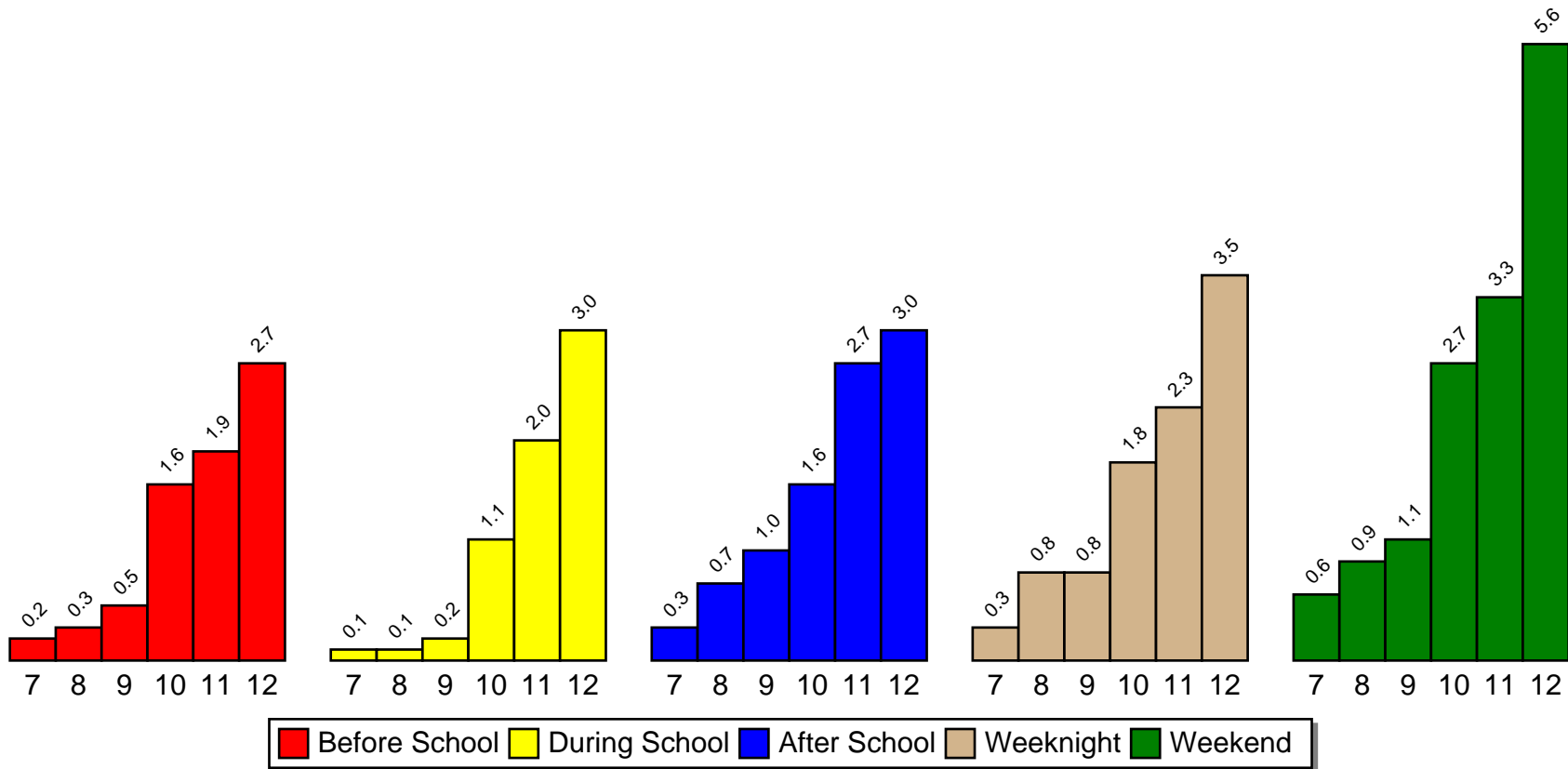
Source: Pride Surveys

When Do You Use Marijuana



Source: Pride Surveys

When Do You Use Prescription Drugs



Source: Pride Surveys

11 School Safety

The following table lists the percentage of students who responded as *Never* or *Seldom* feeling safe in the following school locations.

Table 30: School Safety

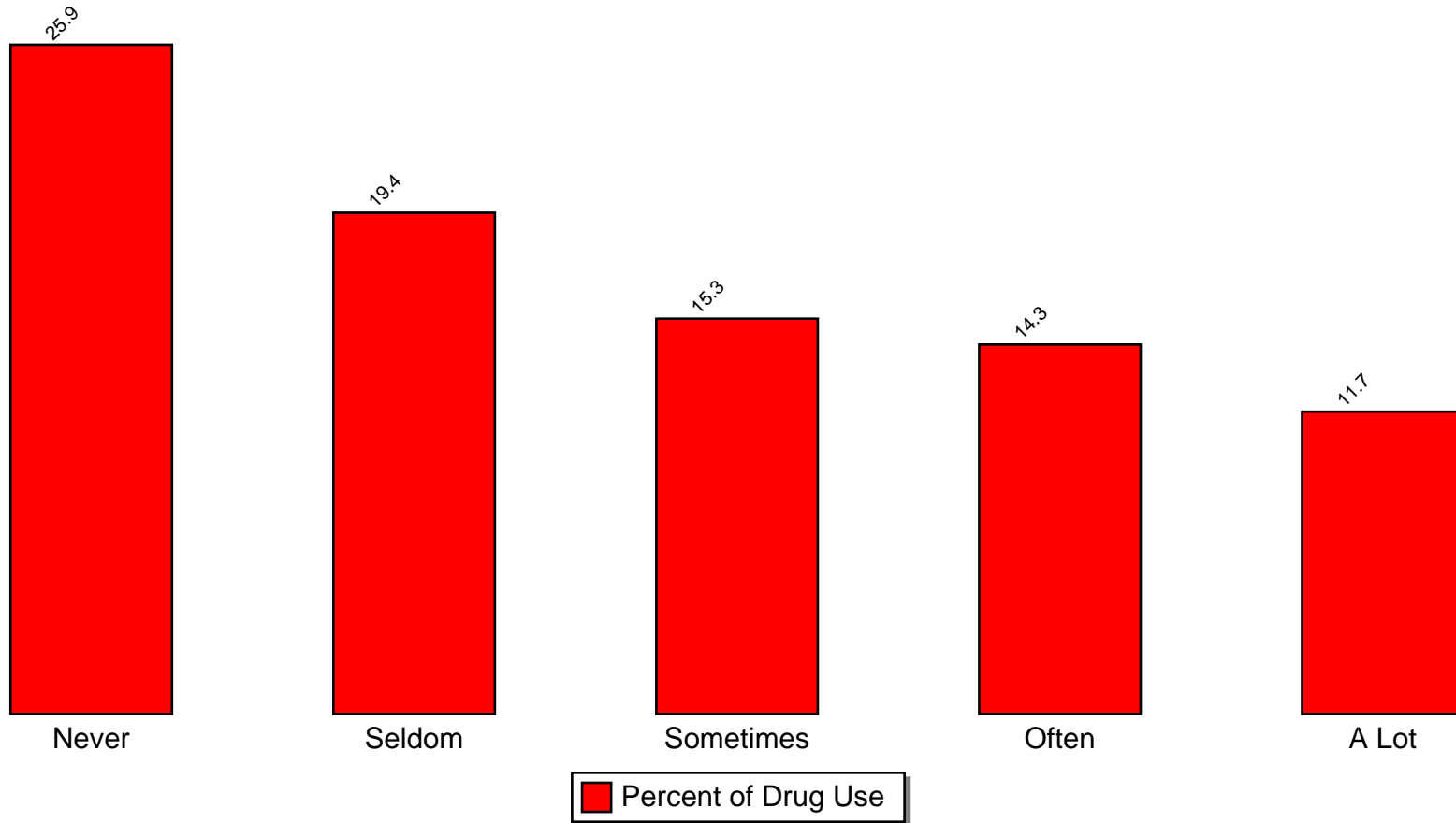
Location	Num	Pct
In the parking lot	1,797	12.7%
On the school bus	1,497	10.6%
In the bathroom	1,456	10.3%
At school events (ballgames, etc.)	1,304	9.3%
In the halls	1,291	9.1%
In the gym	1,084	7.7%
In the cafeteria (lunchroom)	1,068	7.5%
In the classroom	819	5.8%

*Pct represents percent who responded *Never* or *Seldom*

12 Risk and Protective Factors

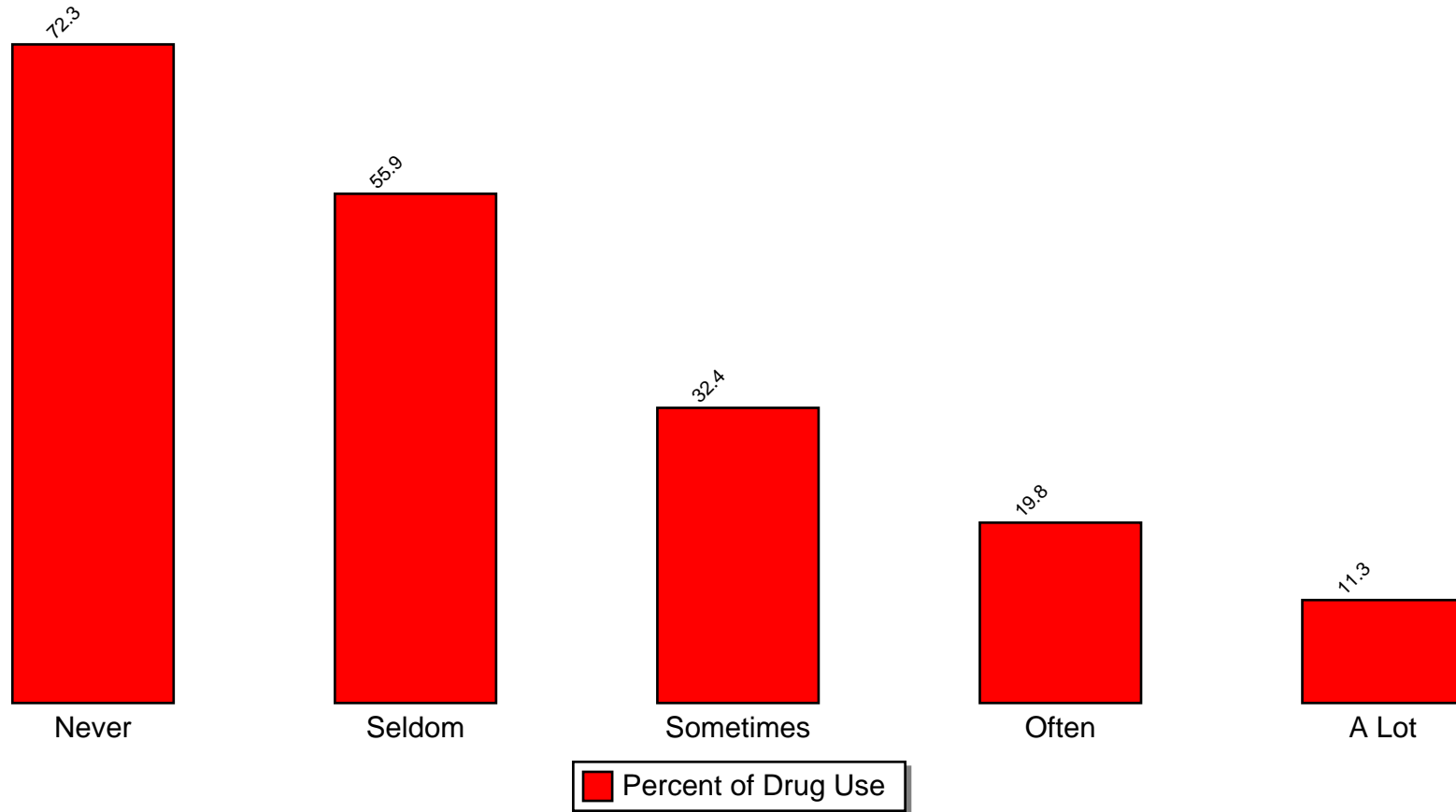
The following graphs on illicit drug use by risk & protective factors show for each category (Never, Seldom, Sometimes, Often, A Lot) of a risk or protective factor question the percentage of students who report using illicit drugs. For example, on the question of taking part in school activities, if the bar labeled NEVER was 40%, this means that OF those students who responded NEVER to taking part in school activities, 40% reported using an illicit drug.

% Students Who Use Illicit Drugs by Take Part in School Activities (School Protective Factor)



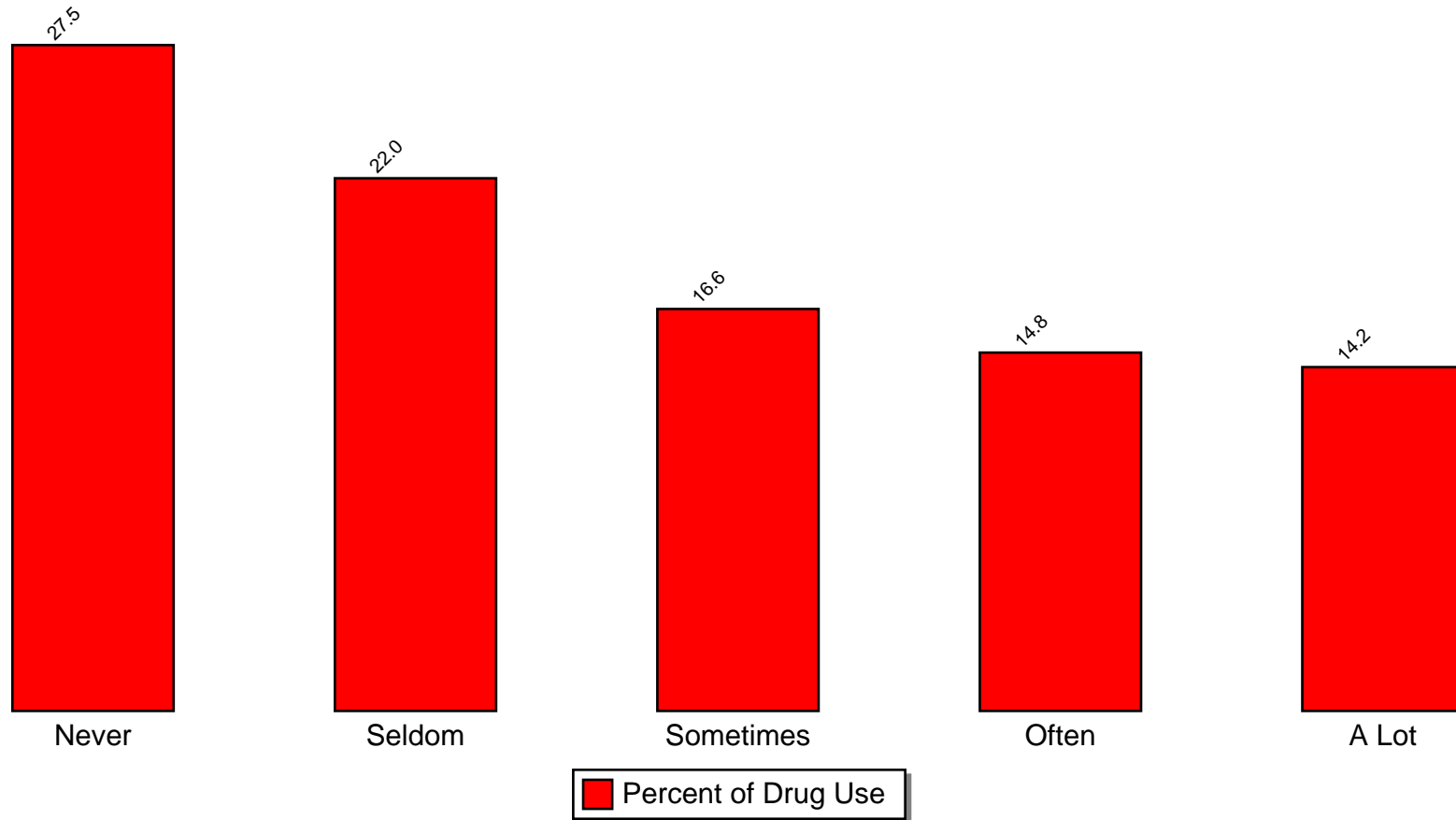
Source: Pride Surveys -- For the group of students who responded NEVER to this question, 25.9% reported using illicit drugs, for A LOT, 11.7% reported using illicit drugs

% Students Who Use Illicit Drugs by Make Good Grades (School Protective Factor)



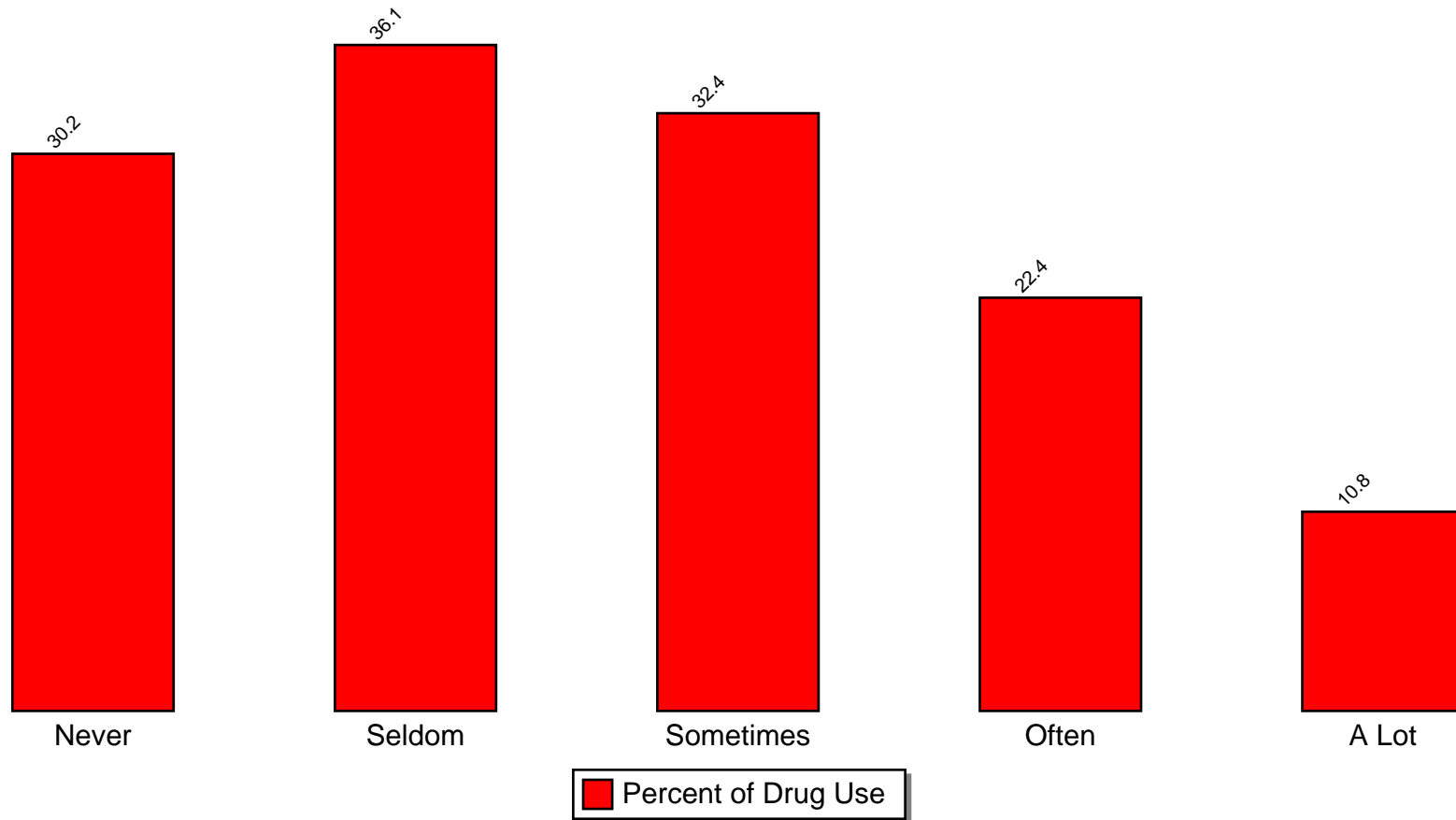
Source: Pride Surveys -- For the group of students who responded NEVER to this question, 72.3% reported using illicit drugs, for A LOT, 11.3% reported using illicit drugs

% Students Who Use Illicit Drugs by Parents Talk About Dangers of Drugs (Parent Protective Factor)



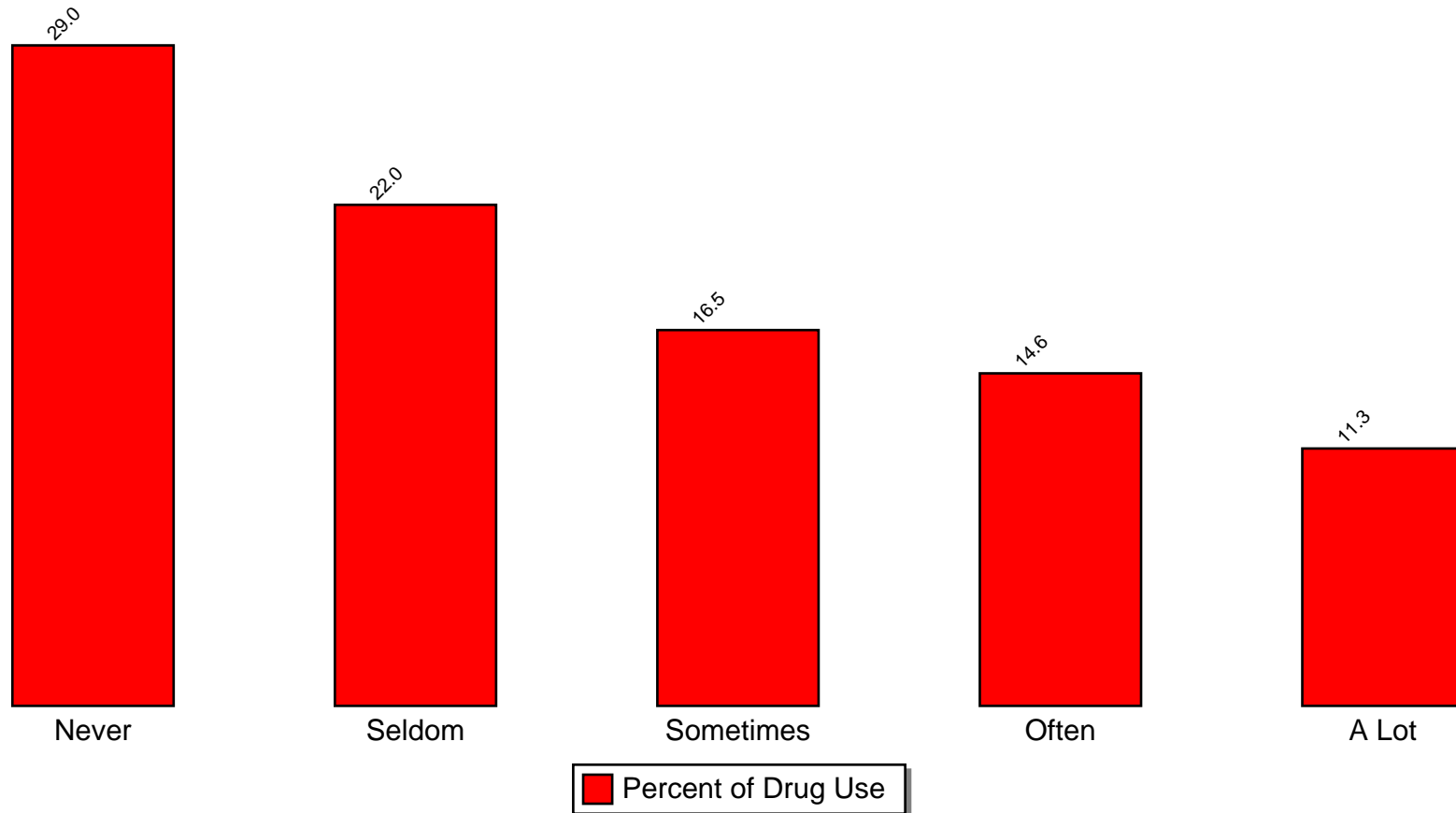
Source: Pride Surveys -- For the group of students who responded NEVER to this question, 27.5% reported using illicit drugs, for A LOT, 14.2% reported using illicit drugs

% Students Who Use Illicit Drugs by Parents Set Clear Rules (Parent Protective Factor)



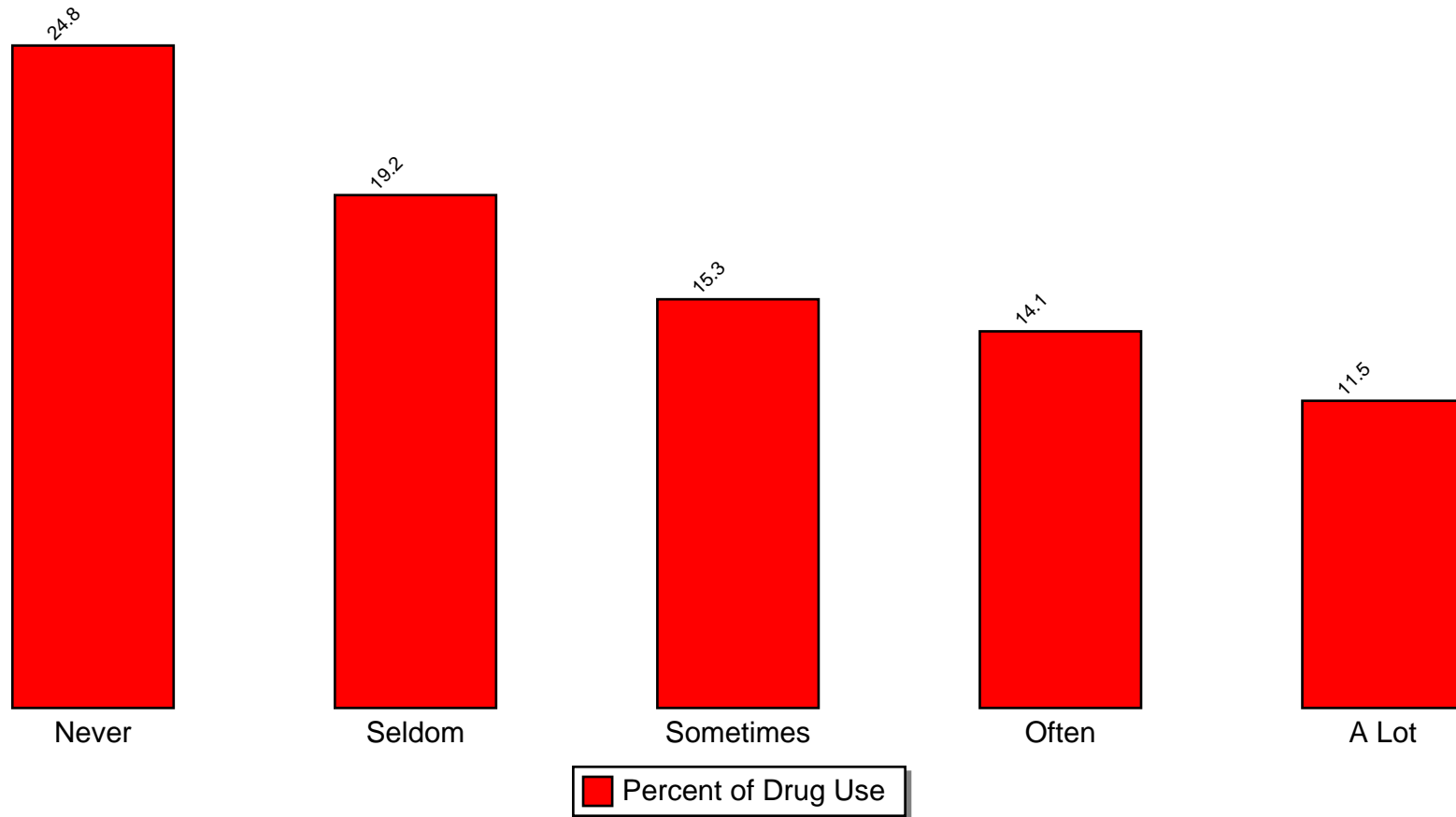
Source: Pride Surveys -- For the group of students who responded NEVER to this question, 30.2% reported using illicit drugs, for A LOT, 10.8% reported using illicit drugs

% Students Who Use Illicit Drugs by Attend Church, Synagogue, etc. (Community Protective Factor)



Source: Pride Surveys -- For the group of students who responded NEVER to this question, 29.0% reported using illicit drugs, for A LOT, 11.3% reported using illicit drugs

% Students Who Use Illicit Drugs by Take Part in Community Activities (Community Protective Factor)



Source: Pride Surveys -- For the group of students who responded NEVER to this question, 24.8% reported using illicit drugs, for A LOT, 11.5% reported using illicit drugs